

TOPCLIN

PROFESSIONAL
SIMPLE. CLEAN. EFFICIENT.



PROTECTING YOUR BUSINESS
WITH EASY TO USE SOLUTIONS FOR
YOUR EVERYDAY CLEANING TASKS

**POWERED BY
ECOLAB**

SIMPLE, CLEAN, EFFICIENT

TOPCLIN brings you the cleaning and disinfection expertise of Ecolab, delivering on performance and in-use costs. This easy-to-use range covers daily cleaning tasks whilst giving you and your customers peace of mind with certified disinfectants and sustainable accreditations from a trusted hygiene partner.

DISHWASHING



MACHINE DETERGENT / UNIVERSAL 2X5L

A universal machine detergent effective on daily stains and soils providing excellent cleaning results.

MACHINE RINSE 2X5L

A universal machine rinse aid that accelerates the drying process delivering sparkling and shiny results.

MANUAL DISH / UNIVERSAL 2X5L/6X1L

A universal manual detergent for the daily hand-washing of dishes, glasses, utensils, pots and pans.

DEGREASING



OVEN & GRILL 6X750ML

An effective and fast acting ready-to-use oven and grill cleaner degreaser that cuts through grease and soil.

DEGREASER 2X5L

An effective multi-surface heavy duty cleaner degreaser for the removal of dirt and grease on surfaces and floors.

SURFACE DISINFECTION



Our disinfectants can be used in everyday environments as part of your daily cleaning routine. They kill bacteria and yeast to state of the art standards, EN1276, EN1650 and EN13697 and are effective against enveloped viruses to EN14476 standards.

DES 2X5L / DES SPRAY 6X750ML

A highly effective cleaner disinfectant with a broad disinfection efficacy.

DES SANITARY 2X5L

A daily washroom cleaner disinfectant with excellent cleaning performance to remove body fats, soap residues and dirt on hard surfaces.

SURFACE CLEANING & ODOUR CONTROL



SURFACE / HD 2X5L/6X1L

A daily maintenance hard surface cleaner that easily removes dirt and soil leaving surfaces smelling fresh and clean.

GLASS 6X750ML

A ready-to-use glass and surface cleaner including stainless steel.

FLOOR 2X5L

A floor cleaner maintainer, which removes dirt, grease and scuff marks leaving surfaces shiny.

MULTI PURPOSE 2X5L/6X1L

A multi-purpose surface cleaner for the removal of dirt and grease leaving surfaces clean with a pleasant fragrance.

YOUR ONE STOP SOLUTION FOR SURFACE CLEANING.

- HARD SURFACES
- FLOORS
- GLASS AND WINDOWS

MULTI NEUTRALIZER 6X750ML

A fast-acting surface and urine neutralizer containing a long-lasting fragrance designed to remove unpleasant smells.

AIR FRESHENER 6X750ML

A ready-to-use air freshener specifically designed to remove unpleasant and unwanted smells.

SANITARY



SANITARY / HD 2X5L/6X1L

A daily washroom and toilet cleaner descaler formulated to effectively clean washroom surfaces.

WASHROOM CLEANER 6X750ML

A daily 3-in-1, fast-acting, acidic washroom cleaner and descaler that leaves a pleasant fresh fragrance.

MOULD REMOVER 6X750ML

A powerful cleaner that removes black mould and mildew stains effectively from washroom surfaces.

LAUNDRY



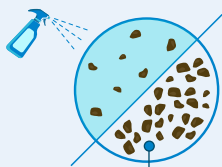
LAUNDRY DETERGENT 10L

An effective laundry detergent for the removal of dirt and grease on washable textiles.

LAUNDRY SOFTENER 10L

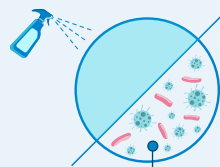
A fabric softener for use on textiles.

By using certified products and correct cleaning procedures disinfectants kill pathogens and food spoilage microbes found in foodservice operations and public spaces.



CLEANING

REMOVES SOIL from a surface but does not kill any organisms



DISINFECTING

DESTROYS or irreversibly inactivates BACTERIA AND VIRUSES



Focused on results, TOPCLIN promotes employee and customer safety and helps you push your sustainability efforts further.



POWERED BY ECOLAB

MANUFACTURED TO
ISO 14001 / 9001 STANDARDS



DIN 18032 CERTIFIED
IMPROVE SLIP RESISTANCE OF SPORTS
HALLS WITH TOPCLIN MULTI PURPOSE.

TOPCLIN ACCREDITATIONS

ECOLABEL



The EU Ecolabel is a label of environmental excellence that is awarded to products and services meeting high environmental standards throughout their life-cycle: from raw material extraction, to production, distribution and disposal. The EU Ecolabel promotes the circular economy by encouraging producers to generate less waste and CO2 during the manufacturing process.

THE NORDIC SWAN



The Nordic Swan is an independent multinational environmental labelling scheme introduced by the Nordic Council of Ministers which has a close cooperation with the EU Ecolabel system "Flower" and guarantees a certain environmental standard. The objective of SWAN is to provide information to consumers to enable them to make the best environmental product choice.



SIMPLE

EASY-TO-USE RANGE WITH 24/7
ONLINE RESOURCES TO SUPPORT
YOUR DAILY CLEANING TASKS



CLEAN

SUSTAINABLE CLEANING
PERFORMANCE FROM A TRUSTED
INDUSTRY LEADER



EFFICIENT

DILUTE, CLEAN AND DISINFECT
WITH MULTI USE PRODUCTS IN
CONVENIENT PACK SIZES

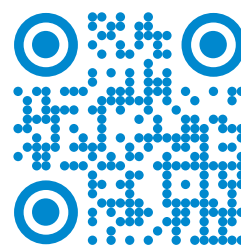


A FAST AND EASY WAY TO FIND TOPCLIN RESOURCES 24/7

1. Quickly access TOPCLIN product information and training guides
2. Find the right product for your cleaning task using our interactive solution selector
3. View and download, wallcharts, cleaning schedules, product guides and much more.



www.topclin.com is the one-stop shop for product information, videos, resources and interactive tools to help you clean with TOPCLIN.



ADDITIONAL RESOURCES

- MSDS
- WALLCHARTS
- PRODUCT GUIDES



Worldwide Headquarters
Ecolab Inc.
1 Ecolab Place,
St. Paul, MN 55102

Ecolab Europe GmbH
Hofwiesenstrasse 349,
CH-8050 Zürich,
Switzerland